



WELCOME TO 2023 ISSUE # 4 OF 'CANE NEWS'



ARE YOU FOLLOWING US ON FACEBOOK?

Be sure to 'like' our page to keep up to date with Proserpine cane industry news, events

It's show time!



CANEGROWERS Proserpine is excited to once again be hosting our annual Show Cane competition at this year's Show Whitsunday. We already have fantastic local sponsors on board, with some exciting prizes on offer. Keep your eye on your email inbox and the CANEGROWERS Proserpine facebook page, as this year's schedule will soon be emailed to all members. Reminders of entry dates will be posted on our facebook page.

Please take note of the entry dates and times for each section, as they have changed from last year:

Sections 8 to 10

All entries are to be taken to the Proserpine Showgrounds on **Tuesday 20th June, between 9am and 4pm.**

Sections 1 to 7

All entries are to be taken to the Proserpine Showgrounds on **Thursday 22nd June, between 9am and 4pm.** All entries must be in position on the exhibit display stand prior to 4pm, with entry paperwork completed and all tags fixed to entries.

Late entries for any section will not be accepted.

The 2023 competition has a new section!

We're very pleased to announce a new section for this year's competition; Section 11 - Proserpine Young Farmer trophy. To participate within this section, entrants must meet the general criteria for the overall competition, be actively farming and aged 40 years or under. Membership with Proserpine Young Farmers is not necessary. Points for this new section will be counted from entries within the existing sections, meaning that no additional cane is required to compete in section 11.

We encourage all members to join us for Friday's presentation afternoon, which will commence at 2pm. Come and see the exhibit, support your fellow members and enjoy a great afternoon.

Printed copies of this year's schedule are available from the CANEGROWERS Proserpine and SSP offices. If you would like a schedule emailed to you, please contact our office on 4945 1844 or at prp@canegrowers.com.au. The 2023 schedule is also available on the Show Whitsunday website.

If you have any questions about this year's competition, please contact the CANEGROWERS Proserpine office or Frank Millar.

UPDATES TO AERIAL APPLICATION PERMIT

Members are advised that the minor use permit for aerial application of bait by helicopter or UAV in lodged cane, has been approved for another 5 years by the APVMA – note the conditions in the attached copy of the permit including:

- Use must be in accordance with conditions of a Damage Mitigation Permit issued by the Queensland Department of Environment and Science.
- The Permit Holder (Canegrowers) will need to advise the APVMA each year of the total area of cane crops treated via aerial application methods.



CANEGROWERS

MARKETING INFORMATION SERVICE

Info, new video & new PDFs to download & read

Members can access current and previous updates by logging into the member services section at www.canegrowers.com.au, using your CANEGROWERS membership number.

If you do not have your member number, please contact the CANEGROWERS Proserpine office on 4945 1844.



We'd love to share how our members are filling their days, new technologies or methods being used, photos of our beautiful area and any feel good or funny situations that you find yourselves in, but we need your help!

If you have something to share on the CANEGROWERS Proserpine facebook page – Proserpine Director, Bessie Orr, wants to hear from you!

Need a little help taking some photos to share or putting together your story – no trouble – we'd love to help.



Email your stories, photos etc to Bessie at: proscgmedia@gmail.com or phone Bessie: 0437 538 044.

CANEGROWERS PROSELINE MAY INSURANCE UPDATE

Have you disclosed ALL of your driver's information to your insurance company?

Have you checked that your driver's hold a current driver's license?

Do they have any conditions?

Have they been charged, convicted, or have any allegation pending for any offence?

It is requirement of your insurance coverage that you disclose all information to your insurer. Failure to do so can result in your insurer cancelling your

policy or reduce the claim settlement amount they will pay for a claim, or both. If your failure to tell them is fraudulent, they may refuse to pay a claim and treat the contract/policy as if it never existed.

To help our clients, CANEGROWERS Insurance has produced an easy-to-use Driver Declaration form to use throughout the employment process. Copies can be obtained by phoning or visiting the Proserpine office.

Proserpine Insurance Admin, Jess Harrison is in the office Monday to Thursday, 8.45am to 2.45pm. Jess is contactable by phone (4945 1844) or email (jess_harrison@canegrowers.com.au).

Pre-pay & *save*

EARN \$150 CREDIT

for every \$10,000 pre-paid for Bio Dunder®
liquid fertilisers before 30 June 2023.

HOW IT WORKS

- > Pre-pay for your Bio Dunder liquid fertiliser before 30 June 2023.
- > We'll apply \$150 credit for every \$10,000 pre-payment, applied as credit to your account.
- > Credit must be used by 31 December 2023.

FIND OUT MORE > 1800 799 037

Offer available to customers who pre-pay by 30 June 2023 a minimum of \$10,000 towards the purchase of Bio Dunder liquid fertiliser for the 2023 fertilising season. The value of the credit will be calculated on a pro-rata basis for pre-payments above \$10,000. The credit can only be redeemed on purchases of fertilisers from Wilmar BioEthanol (Australia) Pty Ltd ABN 85 009 660 191 (Wilmar) by 31 December 2023 and is non-transferable. Offer subject to change. Wilmar, its employees, agents or contractors are not providing any financial, legal or tax advice. Wilmar recommends that interested parties obtain their own independent financial advice on the suitability and benefits of this offer based on their specific circumstances.



WILMAR UPDATE: BOILER MAINTENANCE TO UNDERPIN RELIABILITY

Wilmar Sugar is conducting major maintenance on all three boilers at Proserpine Mill to improve steam generation for the upcoming crush.

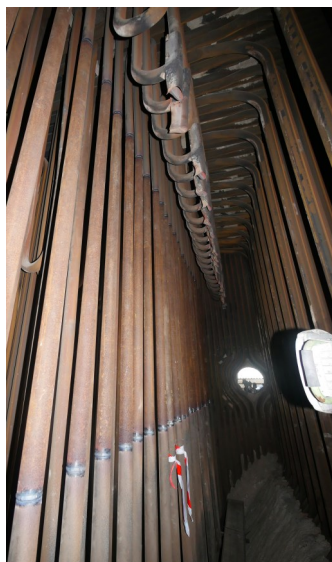
The company is spending \$420,000 on boiler maintenance in 2023. The works program includes replacing end-of-life boiler tubes, installing new boiler grates and carrying out refractory repairs. The major focus has been on Boiler 4 – the factory's highest capacity boiler – to shore up performance and reliability.

The work is being led by Wilmar Sugar Reliability Engineer Vinny Pratt and Work Coordinator Michael Grigg and executed by Valmar Engineering and Total Refractory Management (TRM). Wilmar Sugar would like to acknowledge the crew from Valmar and TRM for their professionalism and quality of work.

Below: Work Coordinator Michael Grigg and General Mill Worker Cheryl Milton have been working on boiler maintenance at Proserpine Mill.



Right: Dozens of superheater loops have been replaced on Boiler 4 to improve reliability ahead of the 2023 crush.



DIRECTOR PROFILE: LINDSAY ALTMANN

Tell us a bit about yourself and something other growers might not know about you.

I spent 10 years working underground at South Blackwater and ended up in Carborough Downs but was actually born in Mt Isa.



I am a 3rd generation cane farmer and have been farming in North Gregory since 1984 in partnership with my brother Slim. I am a semi-retired pig hunter and in my past years I enjoyed playing and coaching rugby league. I am married to Denise and have four kids and six grandkids, so far.

How long have you been a Canegrowers member for and how long have you served on the Board?

I have been a member for nearly 40 years. I was elected to the Board in 2010 and am currently serving my fifth term. Without my brother Slim's understanding and help over these past 12 years, I would never have been able to serve on the Board, so I am sincerely thankful for his understanding.

Why do you think Canegrowers is important for the future of Proserpine growers?

I consider working in a collective to be far better for growers than trying to negotiate anything on one's own. This for me was very evident in my past life where I worked within the union movement and saw the benefits there.

What has changed in your years as a Board Member?

The biggest changes came when we lost our milling co-operative in 2011. The introduction of marketing was also significant for growers when we could take control of our pricing. Since those days many Proserpine growers have embraced this change.

Where would you like to see Canegrowers positioned in the future?

It's a difficult question, but I would like to see an annex under Canegrowers which allows the harvesting sector to be more involved in our structure. They are the third leg that keeps our industry going with us the growers and our miller. I believe that we get a decent service from Canegrowers and I hope growers make use of it more into the future.



SUGAR SERVICES PROSERPINE

"WORKING FOR THE LOCAL INDUSTRY"

PRODUCTIVITY MEETINGS

Peter Larsen, Agriculture manager for Wilmar Sugar will be in attendance to discuss productivity options.

District	Date	Venue	Time
Kelsey Creek	6/06/2023	Kelsey Creek Hall	9.30 am
Strathdickie/Gregory/Koolachu Glen Isla/Town	6/06/2023	Steve Cantamessa	2.30 pm
Proserpine Young Farmers ONLY	7/06/2023	Sam Orr	9.30 am
Up River/ Six Mile/Watsonson	7/06/2023	Louis Raiteri	2.30 pm
Bloomsbury/ Elaroo	8/06/2023	Tony Jeppesen	9.30 am
Lethebrook/ Gunyarra	8/06/2023	Banana Pocket Hall	2.30 pm
Cannonvalley/ Preston	8/06/2023	Ed McDonald	7.00 pm

Can't make it to the meeting in your district? Come along to another on a day you can!

Refreshments provided.





OPPORTUNITIES TO CAPITALISE ON HIGH PRICES

GEI pricing mechanism selection for 2023 season closed at the end of April, with growers choosing overwhelming to stay with forward pricing as opposed to pool products. This is despite the Wilmar Production Risk Pool delivering growers a final price of 622/t Actual in 2021 and currently forecast at \$718/t Actual for 2022 season!

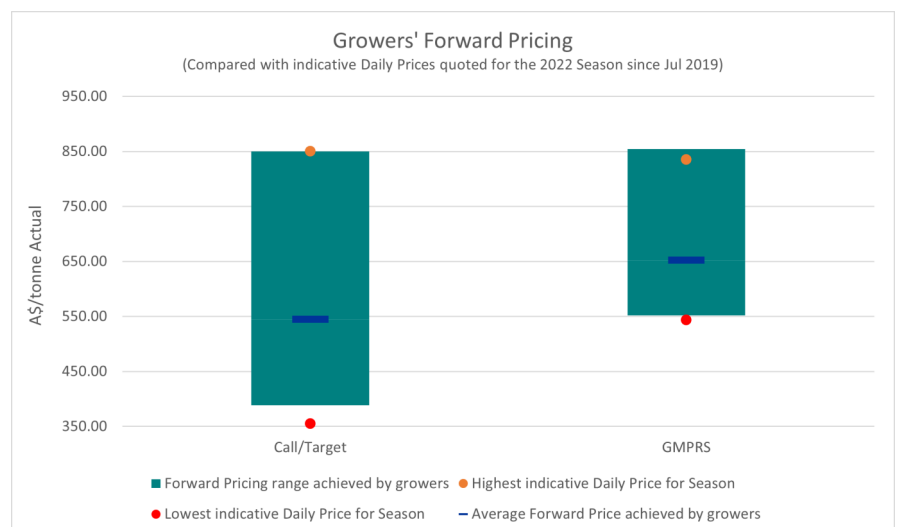
We have done some high-level analysis of the 2022 season now that grower pricing has been finalised for the Call, Target and GMPRS mechanisms – with some outstanding results. Across all regions, Target price growers achieved an average of \$546/t Actual with a range of fixations from \$388 - \$850/t Actual.

For growers using the GMPRS option for the 2022 crop, the average was \$653/t Actual (range \$552 - \$850/t Actual) for their final 27 per cent of production. To determine the all-up Actual price, growers need to add the Allocation Account for Target and GMPRS, which is currently forecast around \$38.50/t Actual.

To help growers with forward pricing decisions, we are compiling a longer-term analysis on the ranges and outcomes of grower Target pricing results over the years, which we will distribute shortly. Already we have seen a wide range of prices offered across the current three forward years. For 2023, our Target growers have been selling into the rising prices, with less than 10 per cent of nominated GEI tonnes still to be fixed.

Commitments to our popular GMPRS mechanism grew again this year. Indicative pricing opened around the \$810/t Actual level with some growers locking a portion of the tail end of their crop in at these levels. Most are sitting back and waiting to see how the season unfolds before getting too heavily committed on price for the cane production that is most at risk of delivery.

Where to from here as far as price is concerned? Right now, both the AUD and #11 appear to have reached a happy place. The AUD is locked in a trading range of 66-68 cents while the market works out the next move on US and AUS central bank rates decisions. Similarly, sugar is establishing a 25.50 to 26.50c/lb trading range as focus remains on the output of Brazil's crush and the speed at which sugar can get to market. We know this hiatus won't last long, but it is nice to take a breather after an extremely volatile time on both markets.



For more information



SHIRLEY NORRIS

Proserpine Grower Marketing Consultant

Shirley.Norris@au.wilmar-intl.com

0437 803 019

ChemClear & DrumMuster



ChemClear will be conducting collections throughout Queensland during August to September this year. For more information on how to organise your collection, visit: www.chemclear.org.au.

If your disposal requirements are urgent please contact ChemClear on **1800 008 182** and their team will be able to advise of any options available to you.



For disposal of empty, clean chemical containers at any time, there are 2 drumMUSTER collection sites in the Whitsunday area: Kelsey Creek Landfill & Bloomsbury Transfer Station.

Both locations can accept suitable containers during their usual operating hours. For larger drop-offs at Kelsey Creek Landfill, please phone ahead of time to make a booking. No bookings are required for Bloomsbury Transfer Station.

WEIGH UP YOUR OPTIONS



Sugar prices are strong. If you intend to use forward pricing, you might wish to nominate your marketer for 2024 and be ready to lock in prices you like. Alternatively, you've got time to make a decision.

Remember, the marketing nomination date is 31 October (not 30 June).

- > **You can choose** whether you nominate your GEI Marketer for one, two or three years.
- > **You can choose** to split your nomination between marketers.
- > **You can change** your nomination at any time before 31 October.

Want to know more?

Call our Proserpine Grower Marketing Consultant



SHIRLEY NORRIS
OFFICE Proserpine Mill
PHONE 0437 803 019



wilmar

Irrigating Sugar Cane

Profitability improved by
irrigation management



Friday 2 June 2023
12.30pm - 2.30pm

695 Upper River Rd.
Foxdale QLD 4800

**Morning tea, lunch and
refreshments provided!**



RSVP

Monday 29 May

E: ruby.gerke@reefcatchments.com
M: 0429 194 111

Frank Millar
M: 0419 679 427

**BYO: Chair, water bottle, sun
safe clothing and sturdy shoes.**

**Join us for a day of talks and demonstrations
about irrigation and how to improve your
systems for the year ahead.**

Guest Speaker: Steve Attard - Agritech

Highlights:

- Update on tariffs – QCA has released the draft determination for 2023/2024
- Strategies to bring energy costs down while maximising production and increasing profit.
- We will look at case studies that highlight the benefits from;
 - tariff review,
 - an impeller trim to a pump,
 - using IrrigWeb to help with scheduling irrigation and assessing yield potential.
 - automation to make irrigation easier.

This event is proudly delivered by Reef Catchments through funding from the Australian Government- Reef Trust Program.



Great Barrier
Reef Foundation



ELECTRICAL SAFETY IN THE AGRICULTURAL INDUSTRY

Working in close proximity to powerlines, above or below the ground, has its hazards. Each year, the workers in the agriculture industry make contact with electricity assets. This includes contact with poles, wires and pillar boxes by vehicles, the loads they are carrying or their associated plant. Contact can occur during harvesting, spraying, moving machinery and plant from one location to another or when irrigating.

Before you start work

- Before starting work, take the time to plan. Visit lookupandlive.com.au our powerline planning map to identify powerline locations and make a plan to work safe.
- Talk to the person in control of the property about any work areas which may be hazardous.
- Ensure workers have been suitably trained and are competent to perform the work being carried out.
- Know the location of overhead and underground powerlines, poles and stay wires on the property and their proximity to your work.
- Complete a hazard assessment for each paddock and each piece of machinery to be used.
- Install visual markers in any areas where electrical hazards are identified prior to commencing work. Vision can be obstructed by machinery blind spots.
- Monitor weather conditions carefully as powerlines can sway in winds, sag as temperature increases and are difficult to see at dawn and dusk.
- Be aware of reduced powerline heights resulting from damage, often indicated by uneven conductors, excessive sag or slack stay wires.
- Stay well clear of damaged powerlines and

report them immediately by calling triple zero (000).

- Monitor closely any machinery or equipment being operated to ensure required powerline exclusion zone clearances are maintained.
- Ensure operators are aware of the height of their machinery in both stowed and extended positions.
- Ensure all farm workers know the emergency procedures applicable for the work being carried out and the relevant emergency contacts.

Practice safe work habits

- Identify all electrical hazards, assess the risks, establish and introduce control measures, and review these control measures periodically. Control measures may include, but may not be restricted to:
- Appropriate signage at least 10 metres either side of powerlines.
- Contact us about marking powerlines, power poles and stay wires on your property. - Ground barriers, where appropriate.
- Informing workers of required work practices.
-
- Assign a safety observer to each team to ensure required exclusion zone clearances between machinery / equipment and powerlines are maintained.
- Ensure exclusion zone safety clearances between machinery and powerlines are maintained.
- Keep spray from irrigators clear of powerlines.
- Check for powerlines and take extreme care when relocating or positioning irrigators or irrigation pipes.
- Lower all machinery / equipment to the lowest point before relocating between paddocks.
- Ensure maintenance and storage activities are carried out well away from powerlines.

Further helpful information can be found by visiting:

www.ergonenergy.com.au.

Closing date for classified advertisements is the close of business of the first week of each month.

Classifieds are free to CANEGROWERS members.

CANEGROWERS Proserpine does not necessarily endorse products or services advertised in, or associated with the newsletter.

Articles appearing in 'Cane News' do not necessarily represent the policies or views of CANEGROWERS .

PROSERPINE QSL UPDATE



Tap into the power of the QSL App

As we head into the 2023 Season, the QSL App offers more handy tools to support your business than ever before. Watch this short video for a quick tour of some of its most popular features. The QSL App is available free via the Apple and Google Play stores or see your local QSL team for assistance.

Bringing the global sugar market to you: <https://vimeo.com/824936401>

Account reviews and farm visits

Growers are reminded that now is a good time to call their local QSL representative to book an on-farm or office appointment for an annual review of their account, or to go over any new products or tools before the crushing starts.

Third-party payments reminder

Growers who have a third-party payment (lien) in place for the 2022 Season via QSL are reminded that these payments will automatically continue to be applied in the 2023 Season. To make a change to third-party payments for the 2023 Season, please contact your local QSL Team, or call the QSL Direct Helpline on 1800 870 756.

2022 Loyalty Bonus

Time is running out to lock in your Loyalty Bonus for the 2022 Season.

To qualify for this additional payment, growers must have QSL nominated as their GEI Sugar Marketer for the 2022, 2023 and 2024 Seasons by 30 June 2023.

Advance rate increase

QSL's Standard Advance rate increased from 90% to 92.5% this week.

2023 Harvest Pool Opt Out now available

The 2023-Season Harvest Pool Opt Out is now available to QSL Direct growers. No minimum tonnage is required – simply choose to Opt Out and any of your Harvest Pool tonnage which has not already been priced by QSL will be transferred to the Self-Managed Harvest Contract so you can price it yourself.

Just click the Harvest Pool Opt Out button available within your QSL Direct account to view the current value of your priced Harvest Pool tonnage, how much remains unpriced, and the ICE 11 contracts you'll need to price it against if you decide to opt out and start pricing it yourself.

Key Dates 2023

6 June 2023:

- Queensland Day - Queensland Day is a celebration of Queensland's birthday and marks the state's official separation from New South Wales as an independent colony in 1859. Queensland Day 2023 marks 164 years since this momentous occasion.

20 June 2023:

- Last day to price 2023-Season Target Price Contract tonnage before the pricing window is automatically extended and roll adjustments apply.
- Last day to achieve or roll pricing allocated to the July 2023 ICE 11 contract through the Individual Futures Contract or Self-Managed Harvest Contract.

30 June 2023:

- Last day to qualify for the 2022 QSL Loyalty Bonus.

Subscribe to QSL's Daily Prices Tracker

The QSL App's newest feature, the Daily Prices Tracker, provides growers with an interactive view of daily sugar pricing and historical results, allowing them to track market movements. This handy tool also allows growers to sign up to receive daily price notifications. Want to subscribe? Simply head to the 'Tools' section of the QSL App, select 'Daily Prices Tracker' and hit the 'Subscribe' button at the bottom of the screen.

For more information please contact your local representative:

Central Region



Grower Relationship Manager
James Formosa
0437 645 342
james.formosa@qsl.com.au



Grower Relationship Officer
Sonia Ball
0418 978 120
sonia.ball@qsl.com.au



Grower Relationship Officer
Karen Vloedmans
0429 804 876
karen.vloedmans@qsl.com.au

Disclaimer: The information in this document does not constitute financial advice. Growers should seek their own financial advice and read the QSL Pricing Pool Terms in full (available at www.qsl.com.au) before making any pricing and pool selection decisions. QSL does not accept any responsibility to any person for the decisions and actions taken by that person with respect to any of the information contained in this document.

HEAVY VEHICLE ROAD ACCESS: WHAT IS REQUIRED FOR AG VEHICLES?

On the 3rd of May, CANEGROWERS held a transport workshop on legislation that governs the use of heavy agricultural vehicles on public roads. The workshop identified important requirements that growers and contractors needed to be aware of.

Did You Know?

- You needed a permit for agricultural vehicles wider than 4m when travelling on a Critical Road (e.g., the Bruce H/way) under the National Class 1 Agricultural Vehicle Notice?
- That this is relaxed to 5m for Major or Minor roads under the same Notice?
- That without the Agricultural Vehicle Notice this would be limited to 2.5m?

Representatives from the Department of Transport and Main Roads (TMR) and the National Heavy Vehicle Regulator (NHVR), presented on various topics including when and how to apply for permits as required by law.



Insert: Burn Ashburner presenting to attendees of the Transport Workshop held on 3rd of May

Burn Ashburner (QCGO Senior Manager: Industry) has summarized dimension limits for when a permit is required, with a very useful guide that can be viewed by visiting the CANEGROWERS website. This is one of several guides that QCGO has produced which may prove useful to members. Other guides include mass limits, pilot requirements, check lists and road maps identifying critical and major roads. Please email brendon_nothard@canegrowers.com.au for more details.

For permits, growers can register and apply on the NHVR Portal here: <https://www.service.nhvr.gov.au>. When applying for a permit, the NHVR have staff that can help guide you through the process. Call them on 13 64 87.