

Cane News

*CANEGROWERS Proserpine's
monthly member newsletter*



WELCOME TO THE 2022 ISSUE # 3 OF 'CANE NEWS'

DATE CLAIMERS

May

10th & 11th Canegrowers Business Essentials course, Canegrowers Proserpine
12th Mackay Whitsunday Woody Weed workshop, Bloomsbury
31st QFF Tariff survey closes

June

1st Proserpine Precision Agriculture workshop, Proserpine Showgrounds
10th Farmacist Advanced Spray Application workshop
17th Show Whitsunday

SSP MEMBERS - HAVE YOU BOOKED YOUR RSD TESTING?



Now is the time to book your RSD testing. The SSP team anticipate a high demand for testing this year, so to ensure your results are received as promptly as possible, please contact Frank (0419 679 427) or George (0488 777 657) to arrange your testing.

The Lab takes approximately three weeks to return testing results. Growers will be advised of their results by text message with an invoice following shortly afterwards.



JEPPESSEN FARMING CO.

For all your agricultural contracting needs
Laser levelling , truck & dog, surveys, earthmoving & more

Tony Jeppesen

0414 322 729

Jake Mitchell

0408 160 660



Need help with your 2022 *fertiliser budget?*



Talk to me about how you
can optimise your nutrient
use efficiency, and get the

best results

from your Bio Dunder®
liquid fertiliser.

JACOB SNYMAN
Agribusiness Agronomist
0419 174 616



wilmar

BUSINESS ESSENTIALS COMING TO PROSERPINE

CANEGROWERS Business Essential Course will be held in Proserpine on Tuesday 10th and Wednesday 11th May.

The course, developed by CANEGROWERS with funding from the government [Farm Business Resilience Program](#), will provide tools that growers can use to deliver greater profitability and therefore business resilience. The tailor-made course will assist growers to:

- complete a resilience self-assessment based on Smartcane BMP
- better understand and interpret financial reports, budgets and costs of production
- better understand risk and more specifically factors that influence commodity (sugar) prices
- devise strategies to manage risk including price fluctuations
- understand forward pricing and other emerging technologies and marketing tools
- develop a plan to manage the risks as far as possible.

The course is delivered face to face over two days and participants' feedback to date has indicated that everyone found value in the course. Cost of the course is \$110 (including GST) per participant.

Places are limited – to register your interest or if you would like to know more about the course, please contact the office (4945 1844).



CANEGROWERS
MARKETING INFORMATION SERVICE

Info, new video & new PDFs to download & read

Watch this month's video and read the PDF updates from the CANEGROWERS Marketing Information Service to learn what's been happening.

You can access this information by logging into the member services section at www.canegrowers.com.au, using your CANEGROWERS membership number.



COME WORK
with us
THIS SEASON

We're seeking operators, loco drivers, loco drivers' assistants, lab chemists and general mill workers for the 2022 crush.

- > Potential to earn over \$50,000 in just 22 weeks.*
- > Work on the locos or in the mills.
- > Apply your old skills or learn new ones.

Interested? Email info@au.wilmar-intl.com

*Seasonal earnings include super, and depend on the role, allowances, overtime and other factors.

wilmar

SMARTCANE BMP - CHECK THE FACTS!

You may have recently heard an interview on ABC Radio recently in which, disappointingly, another farm group made some inaccurate claims about Smartcane BMP. Here are the facts:

- Smartcane BMP was developed by industry using years of industry sugarcane production research and data (from Sugar Research Australia and its predecessors).
- The recommended practices are not based on water quality monitoring but on industry research and development to make the most efficient use of nutrients and water while keeping soils productive. The program is focused on both profit and sustainability, there are no trade-offs.
- While the Queensland Government supported

Smartcane BMP, it is managed and delivered solely by industry.

Smartcane BMP only provides grower information to the reef report card process if growers give permission. Smartcane BMP is a minor contributor and will remain so until the process is reformed to be fair and reasonable to industry.

If you have any questions about the program, check the website or get in touch!

It is important too that any growers who feel they have suffered productivity losses after accreditation talk to their advisers and Smartcane BMP facilitator – the strength of the program is the support that is there for growers.





PROSERPINE PRECISION AGRICULTURE WORKSHOP

Join leading experts and producers to learn the latest developments in Precision Agriculture and how it can benefit your farming operations.

Practical advice and solutions from farmers and researchers:

- software solutions
- irrigation automation
- grower experiences
- drone demonstrations
- variable rate application
- digital soil mapping
- weather forecasting

When: Wednesday 1 June 2022, 9.00am – 1.30pm

Where: Proserpine Showgrounds, Anzac Rd, Proserpine Qld 4800

RSVP: 26 May 2022 to Stephanie Duncan on 0459 863 298 or email sduncan@sugarresearch.com.au or Frank Millar, Sugar Services Proserpine, on 0419 679 427 or email: frank.millar@sugarpros.com.au

This workshop is hosted by Proserpine Young Farmers supported by SRA and SSP.

WILMAR PRE-SEASON MAINTENANCE

Our teams are busy finalising work programs at Proserpine Mill in the lead-up to the 2022 season. Wilmar is investing more than \$26M in capital and maintenance at Proserpine Mill this year, demonstrating the company's long-term commitment to the region. Since the end of the crush, we've worked to address reliability issues from the 2021 season, as well as implement major capital replacement projects.

Our capital works program is currently on track, however we have faced additional challenges with supply chain and labour force issues this year due to the ongoing impacts of COVID-19. We are planning to start the season in Proserpine on 21 June. Here's an update on our major projects:

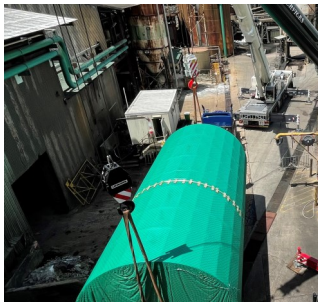


Proserpine's Loco 12 and Loco 14 have both undergone \$1.8M rebuilds as part of Wilmar's long-term strategy to standardise the loco fleet, and boost reliability and fuel efficiency. Both of the 40-tonne locomotives have been rebuilt from the chassis up.

The overhaul included a new cab, Mercedes Benz engine, drive train, PLC control and RSU capability. Loco 14 got a new brake wagon while Loco 12's brake wagon was upgraded. All of the work was done in-house.

We've installed a new rotary juice screen at a cost of \$800,000, replacing a unit that was showing signs of fatigue. The rotary juice screen takes all of the juice from the milling train and screens out the fibre before the juice is heated and clarified.

The new screen has been built and installed by Wilmar employees, as part of our strategy of bringing manufacturing work back in-house.



A new mud filter drum and agitator is being installed ahead of the crush, at a cost of \$1.8M.

The old filter caused significant downtime last year due to its inability to process mud. The new unit is one of three that make up Proserpine's mud filter station.

The new drum and agitator are made from stainless steel to withstand the harsh conditions of the mud filter stage.

2022 SHOW CANE COMPETITION



The return of Show Whitsunday last year was thoroughly enjoyed by all and this was evident by both the number of entries in the Show Cane competition and the number of spectators that were on hand for the afternoon presentations.

CANEGROWERS Proserpine is excited to launch this year's competition with the release of our 2022 Show Cane Schedule next month. The 2022 competition schedule will be emailed to all members during May and printed copies will be available from the Proserpine office.



With great prizes on offer for winning entrants this year, we hope to see lots of entries!



25 Years' experience,
let me help you with all your property needs
Shaun Dobbins | Sales Consultant



P: 0499 878 122 E: shaundobbins@prdwhitsunday.com.au | prd.com.au/whitsunday

QRIDA - NEW DROUGHT ASSISTANCE AVAILABLE FOR PRIMARY PRODUCERS

Primary producers looking to prepare for future droughts or requiring help with related expenses during drought may be eligible for the new range of drought oands through QRIDA. these loans are designed to help producers undertake drought preparation activities and assist with carry-on finances of their enterprises.

Emergency Drought Assistance Loans

The Emergency Drought Assistance loan is an interest-free loan of up to \$50,000 for primary producers to assist in meeting working capital expenses. This loan can be used for:

- paying employee wages;
- paying creditors;
- paying rent and rates;
- buying goods, including fuel, for carrying on the business

Drought Ready & Recovery Finance Loan

The Drought Ready & Recovery Finance loan offers up to \$250,000 to help primary producers undertake drought ready and recovery activities and improve the drought resilience of their primary production business including:

- improving on-farm water infrastructure;
- implementing grain storage;
- reasonable freight components to purchase and install equipment or infrastructure;
- contractor costs or non-salaried employees' costs directly associated with implementing the drought preparedness project;
- removing unviable crops, plants or trees and purchasing and planting new seed, seedlings or trees;

- purchasing and vaccinating new stock or drenching new stock

Producers **do not** need to be drought declared to be eligible for this assistance.

Drought Carry-on Finance Loan

[Drought Carry-on Finance Loan](#) is a **concessional loan of up to \$250,000** for primary producers to assist in meeting carry-on finance including:

- paying employee wages;
- paying creditors;
- paying rent and rates;
- buying goods, including fuel, for carrying on the business

Other drought support available:

[Farm Management Grants](#) offer primary producers a **50 per cent rebate** on the cost of eligible professional advice up to a **maximum \$2,500** to produce a Farm Business Resilience Plan for their property.

[Drought Preparedness Grants](#) offer **up to \$50,000** as a co-contribution grant to assist primary producers undertake on-farm capital improvements that will improve the drought preparedness of their property as identified in their Farm Business Resilience Plan.

[Sustainability Loans](#) of **up to \$1.3 million** are available to help primary producers to improve the sustainable infrastructure of their primary production enterprise. A Sustainability Loan may be used as the co-contribution to the Drought Preparedness Grant for implementation activities.

MAXIMUM CONTROL MAXIMUM FLEXIBILITY



**Our industry-leading Grower-Managed
Production Risk Scheme (GMPRS)
is still the most flexible option for
growers wanting almost 100%
control over their final sugar price.**



Participation in our GMPRS has grown, year on year, since we introduced it to the sugar industry in 2017.



Expressions of interest for the 2022 season close on 29 April, 2022.

Want to know more?

Talk to our Proserpine Grower Marketing Consultant to find out more



SHIRLEY NORRIS
OFFICE Proserpine Mill
PHONE 0437 803 019



CANEGROWERS INSURANCE - DO YOU REVIEW YOUR ANNUAL POLICY RENEWAL?

Do you have sufficient cover for your building & contents?

The annual renewal of your insurance policy is a good reminder to review your building and contents Sums Insured, to ensure the amount listed are current and that you have adequate insurance coverage.

Domestic contents

Most of us underestimate the value of our home contents. When we think of contents we usually think about electronics, major furniture items and maybe a few of our expensive purchases. The smaller items like clothing, linen, kitchen items etc tend to be forgotten but can quickly add up.

When working out what level of contents insurance you need, start by listing all of the belongings that you would actually replace in the event of a total loss (i.e. a fire, where nothing is salvageable) and assess how much it would cost to purchase them at today's prices.

It's important to note that carpet, blinds and curtains are considered contents by insurers and aren't covered by your building sum insured, even though they're made to measure and permanently fitted to your home.



Farm contents & equipment

Things can change a lot in a year and updating insurance coverage for items such as pumps, farm related tools, feed, fuel, irrigation fittings etc can easily be overlooked. Your annual renewal provides a great opportunity to assess what items you have on hand, their current value and which items require cover.

We highly recommend that you discuss your farm contents and equipment with our insurance team, so the correct cover for your items can be determined (i.e. theft, machinery breakdown, specified/unspecified items etc).

Buildings – domestic & rural

Reviewing the listed Sum Insured for your buildings each year is just as important as reviewing your contents cover. We can sometimes be quick to think that our homes or sheds remain at the value that was paid for their construction or for their purchase but building costs can change dramatically. For instance, since the beginning of Covid approximately 2 years ago, building costs have increased on average by 30%.



In the event of a claim, your insurer will only pay up to the amount listed as your Sum Insured. This can, unfortunately, leave you with a large re-build bill if your structure was under insured for current building costs.

The other side of this is that having a Sum Insured listed much higher than your structure's actual worth will only result in you paying an unnecessarily high premium.

When considering a claim, insurers primarily look at the cost of the damage, then compare the cost to repair with the Sum Insured. So while you may have your structure covered for an unnecessarily high value, it doesn't equate to a claim settlement any higher than the actual damage cost.

Are you 'claim ready'?

In addition to reviewing and amending your policy at each renewal, we also really recommend using your annual renewal as a reminder to make sure you're 'claim ready'. Thanks to continually improving weather tracking and reporting, we usually have a decent amount of time to prepare for approaching weather events. Unfortunately, major weather events can happen without any warning or can quickly become more extreme than initially expected and this means that, rightfully so, our focus is on keeping ourselves and our property safe, with no time to become 'claim ready'.

One of the easiest and best ways to be 'claim ready' is to take photos of your insured structures (home, sheds, farm structures etc), contents and equipment, then upload these photos to the cloud rather than keeping them on a device or drive at your property. When making a claim, the insured has the responsibility of proving what items have been lost and this is so much easier when photos have been taken prior to the event.

Please contact the Proserpine office with any questions you may have, to request a quote or if you'd like to discuss or make any updates to your insurance policy. Trish is in the office Monday to Thursday, 9am to 3pm.

WILMAR - PRE-SEASON LAUNCH WELL ATTENDED

The team from Wilmar AgServices hosted a successful fertiliser Season Launch event at Proserpine's Hotel Metropole on 6 April, with close to 20 growers attending. AgServices Business Manager George Russell said the grower meeting was one of seven being held across the Proserpine, Mackay and Burdekin regions in the lead-up to this years' peak fertilising season.

He said the Season Launch events were an important opportunity to provide farmers with the latest information on crop nutrition and fertiliser management. "Our agribusiness agronomists Jacob Snyman and Glauco Defendi are passionate about the benefits of sustainable fertilisers and best farming practices," Mr Russell said. "They spoke to growers about nutrient pathways, the benefits of Bio Dunder's high organic carbon content, and why Bio Dunder liquid fertilisers are safe for the environment."

The last of the 2022 Season Launch events will be held at Sarina on 11 May. Places for the Sarina event are limited, so secure your spot by calling 1800 881 957 or emailing agservices@wilmar.com.au.



L to R: Jacob Snyman, Lou & Betty Raiteri



L to R: Larry & Matthew Muller, Jacob Snyman



L to R: Ambrose Vickers, Jacob Snyman & Max MacFarlane



L to R: Debbie & Gary Simpson, Jacob Snyman



Above, L to R: Jacob Snyman, PJ Gileppa, Glauco Defendi

Left, L to R: John Casey, Jacob Snyman



FARMACIST

Precision Agronomy Solutions



ADVANCED SPRAY APPLICATION WORKSHOP

This course has been developed to improve your pesticide use efficiency to help you **maximise your spray jobs and save you money**. This training is delivered by a leading expert in chemical spray application with nearly 30 years experience in a variety of industries.

Presented by Craig Day of



If you prepare or apply chemical on the farm using spray equipment, then this workshop is for you! Learn about or refresh your knowledge on the following:

- Weather and drift management
- Nozzle selection for improved coverage
- How to recognise and avoid inversions
- Chemical label requirements
- Record keeping including spray plans
- PPE and OHS
- Practical strategies for mixing and applying chemical
- Spray water quality
- Effects of adjuvants in the chemical mix
- Development of spray drift management plan customised to farming operation - machine, speed, nozzles, etc.
- Calibration and testing of spray equipment
- General fine-tuning of the machine
- Practical demonstrations using a variety of nozzles and water rates



2022 DATES

Mackay:
7th, 8th & 9th of June

Proserpine:
10th of June

BOOK YOUR PLACE NOW!

Mackay/Proserpine RSVP to Jess: 0429 843 125



Great Barrier
Reef Foundation

Project Bluewater 2 is funded by the partnership between the Australian Government's Reef Trust and the Great Barrier Reef Foundation, and Farmacist Pty Ltd

PROSERPINE QSL UPDATE



Key Dates

30 April: Pricing Declaration Date for the 2022 Season.

This is the last day to nominate which QSL pools and pricing products you'd like to use for the 2022 Season.

Indicative Floor Pool Price

QSL is now publishing an indicative floor price for growers considering nominating for the 2022 Guaranteed Floor Pool. This indicative floor price is featured in the Indicative ICE 11 Prices table emailed to growers each weekday and available on the website. QSL's Guaranteed Floor Pools provide participants with a known minimum return (the floor) as well as additional returns should the market rise above the pool's strike price. Nominations for the 2022 Guaranteed Floor Pool close on 30 April 2022.



Leave the QSL Harvest Pool at any time during the season and price more yourself using QSL's new Harvest Pool Opt Out. Just choose to 'Opt Out' and any of your Harvest Pool tonnage which has not already been priced by QSL will be transferred to the Self-Managed Harvest Contract so you can price it yourself.

Available to QSL Direct growers from 1 May 2022.



QSL is a proud supporter of the following industry events:

ASSCT (Australian Sugar Cane Technologists) Conference

19 – 22 April 2022 | Mackay Entertainment & Convention Centre

For more information or to register, head to assct.com.au

Mackay Ag Trade Expo

13 – 14 May 2022 | A two-day showcase and celebration of all things agriculture. For more information visit mackayagtradeexpo.com.au

2022 Women In Sugar Conference

26 - 27 May 2022 | Burdekin Theatre, Ayr. [Click here for more information](#)

Farming in Focus Forum

27 May 2022 | Ayr Showgrounds

For more information or to book your ticket, [click here](#).

2022 Gin Gin Show

28-29 May 2022 | Gin Gin Showgrounds

**For more information please contact QSL
Grower Relationship Officer Karen Vloedmans:**

Proserpine



Grower Relationship Officer
Karen Vloedmans
0429 804 876
karen.vloedmans@qsl.com.au

Disclaimer: The information in this document does not constitute financial advice. Growers should seek their own financial advice and read the QSL Pricing Pool Terms in full (available at www.qsl.com.au) before making any pricing and pool selection decisions. QSL does not accept any responsibility to any person for the decisions and actions taken by that person with respect to any of the information in this document.

Join Reef Catchments
at Bloomsbury Hall
for a hands on
**WOODY WEED CONTROL
WORKSHOP**



MACKAY WHITSUNDAY Woody Weed Workshop

THURSDAY, 12TH MAY 2022

Reef Catchments invites landholders to join us for a weed workshop at Bloomsbury

Participants can expect to hear from a range of local weed control experts in an interactive workshop based around the identification and management of locally significant woody weeds.

Topics of the day will include:-

- Priority woody weeds of our region-
- Keys to effective herbicide application-
- Developing integrated weed management plans-
- Practical treatment demonstration-
- Q & A Session with presenter panel-

This Reef Catchments event is free for land managers to attend.

Thanks to event partners RALF and Mackay Regional Pest Management Group. This workshop is funded through the Australian Governments Reef Trust.



EVENT DETAILS:

LOCATION: Bloomsbury Soldiers Memorial Hall
32 Doughertys Rd, Bloomsbury QLD 4799

DATE: Thursday 12th May 2022

TIME: 8:30am - 2:00pm

BRING: Please wear enclosed shoes, sun smart apparel and hat. Please bring a water bottle.

Morning tea and lunch will be provided.

Please RSVP by 9th May- At eventbrite or contact:

Project Officer
Emma Jones
emma.jones@reefcatchments.com
0419 197 144



Closing date for classified advertisements is the close of business of the first week of each month. Classifieds are free to CANEGROWERS members. CANEGROWERS Proserpine does not necessarily endorse products or services advertised in, or associated with the newsletter. Articles appearing in 'Cane News' do not necessarily represent the policies or views of CANEGROWERS.